

# PENTHOUSE 1

DUPLEX | 3 BEDROOMS AND 3.5 BATHROOMS

## FIRST FLOOR

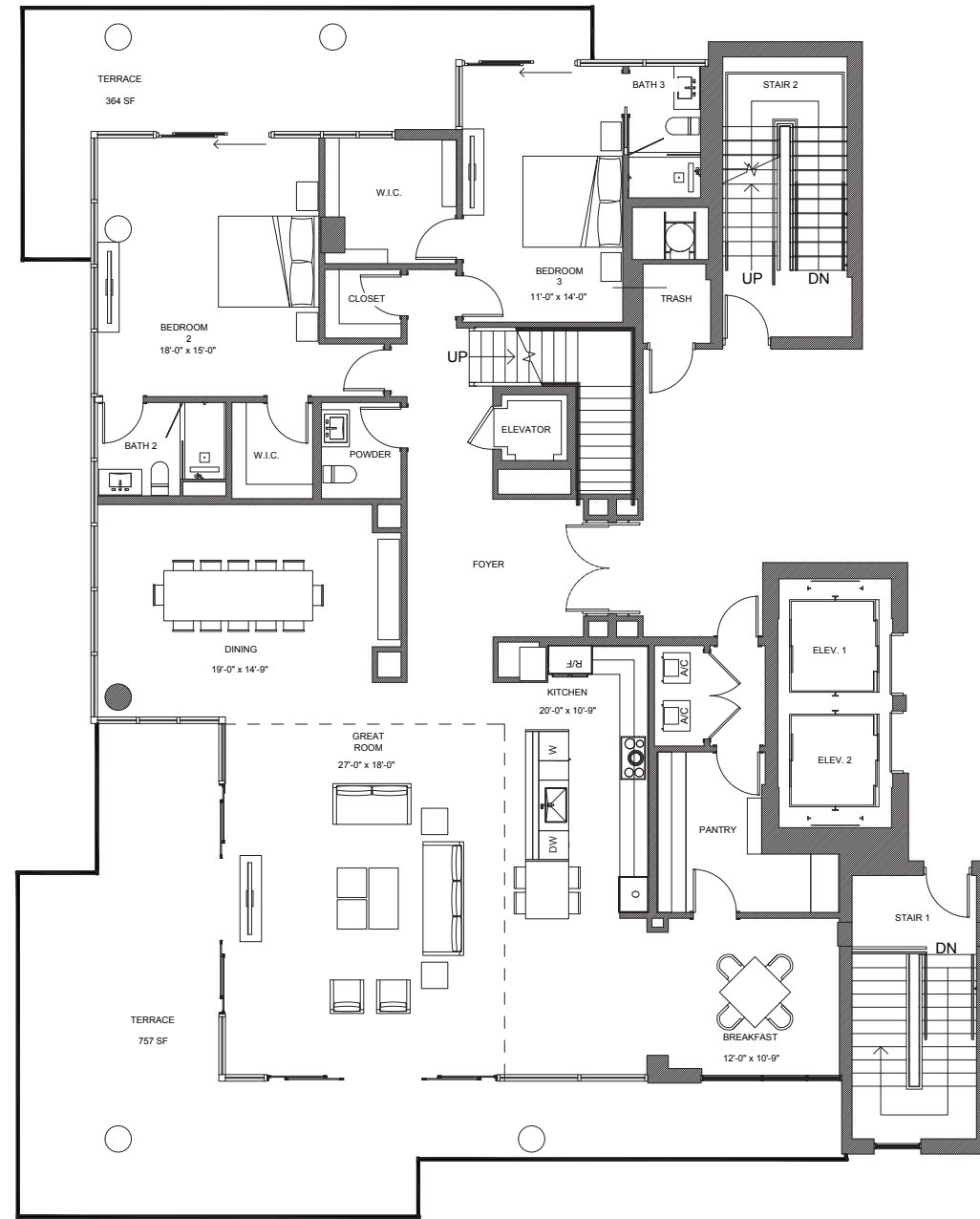
INTERIOR A/C	TERRACE	TOTAL
2656 SF	1121 SF	3777 SF

## SECOND FLOOR

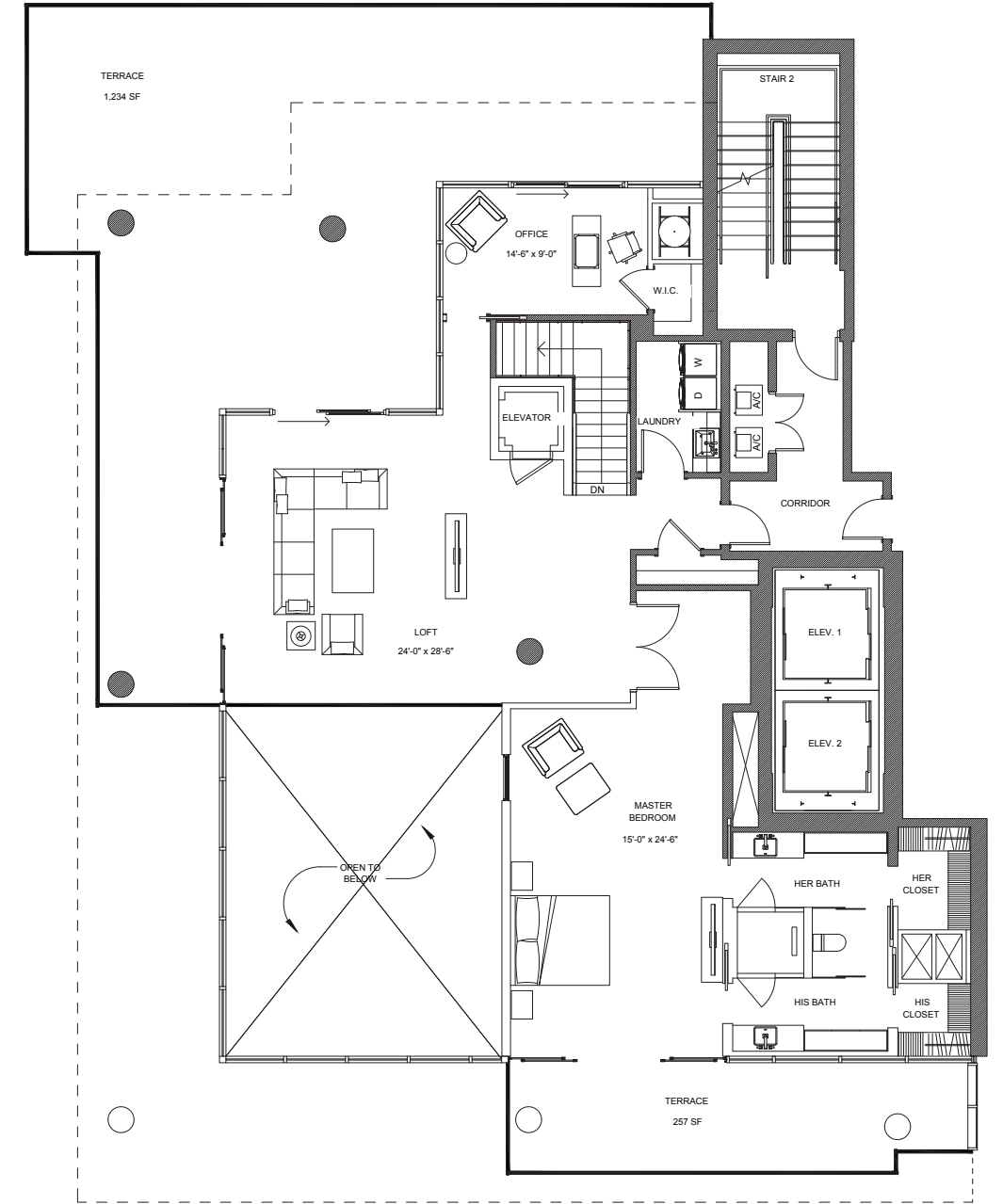
INTERIOR A/C	TERRACE	TOTAL
1763 SF	1491 SF	3254 SF

## The PENTHOUSE FEATURES

- Open indoor/outdoor floor plans
- Spacious terraces with expansive views
- 10' foot ceilings
- Floor-to-ceiling impact glass windows and doors
- Modern European kitchen cabinetry
- Appliance package by Subzero and Bosch
- Large-format European porcelain tile floors
- Solid wood doors with concealed hinges
- Custom finished closets
- LED lighting throughout with dimmers
- Fixtures by Delta
- Smart thermostat
- Whole House Five Stage Hepa air cleaner with ultraviolet light and photocatalytic filter



FIRST FLOOR



SECOND FLOOR

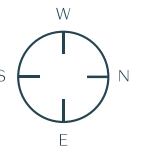
# The TERRACES

527 ORTON AVENUE, FORT LAUDERDALE BEACH, FL 33304

954.604.6188

INFO@THETERRACESFTL.COM

THETERRACESFTL.COM



ORAL REPRESENTATIONS CANNOT BE RELIED UPON AS CORRECTLY STATING THE REPRESENTATIONS OF THE DEVELOPER. FOR CORRECT REPRESENTATIONS, REFERENCE SHOULD BE MADE TO THE DOCUMENTS REQUIRED BY SECTION 718.503 FLORIDA STATUTES, TO BE FURNISHED BY THE DEVELOPER TO THE BUYER OR LESSEE. NOT AN OFFER WHERE PROHIBITED BY LAW. PHOTO IS ARTIST'S RENDERING, SUBJECT TO CHANGE.



DEVELOPED BY  
LATITUDE GROUP

Plans, features and amenities subject to change without notice. All illustrations and plans are artist's conceptual renderings and are subject to change without notice. This advertisement does not constitute an offer in the states of NY or NJ or any jurisdiction where prior registration or other qualification is required. While we have made every attempt to ensure that the information contained in the advertising materials has been obtained from reliable sources, The Terraces, a Condominium, operating under the name of Group Latitude, LLC, is not responsible for any errors or omissions, or for the results obtained from the use of this information, and without warranty of any kind, express or implied, including, but not limited to warranties of performance, merchantability and fitness for a particular purpose. In no event will The Terraces, a Condominium, operating under the name of Group Latitude, LLC, its related partnerships or corporations, or the partners, agents or employees thereof be liable to you or anyone else for any decision made or action taken in reliance on the information in the advertising materials or for any consequential, special or similar damages, even if advised of the possibility of such damages.