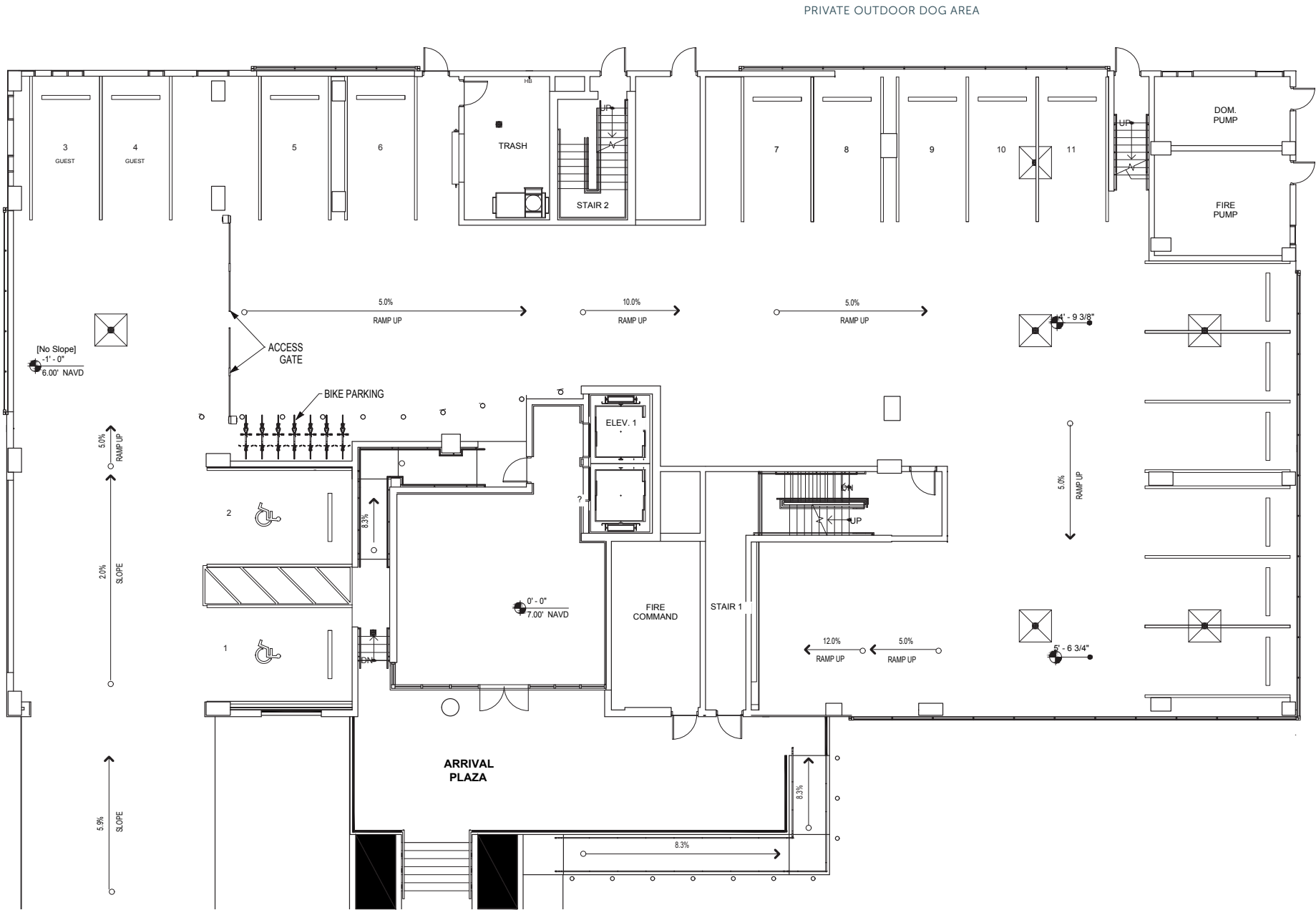


KEY
PLAN

FIRST
FLOOR

AMENITIES

- Private lobby entrance
- PhoneKey mobile access building entry
- Two self parking full-size spaces
- WiFi in all common areas
- Dedicated guest parking
- Bike stations
- Private outdoor dog area



ORTON AVENUE

FORT LAUDERDALE BEACH

The
TERRACES

527 ORTON AVENUE, FORT LAUDERDALE BEACH, FL 33304

954.604.6188

INFO@THETERRACESFTL.COM

THETERRACESFTL.COM

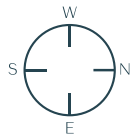


ORAL REPRESENTATIONS CANNOT BE RELIED UPON AS CORRECTLY STATING THE REPRESENTATIONS OF THE DEVELOPER. FOR CORRECT REPRESENTATIONS, REFERENCE SHOULD BE MADE TO THE DOCUMENTS REQUIRED BY SECTION 718.503 FLORIDA STATUTES, TO BE FURNISHED BY THE DEVELOPER TO THE BUYER OR LESSEE. NOT AN OFFER WHERE PROHIBITED BY LAW. PHOTO IS ARTIST'S RENDERING, SUBJECT TO CHANGE.

Plans, features and amenities subject to change without notice. All illustrations and plans are artist's conceptual renderings and are subject to change without notice. This advertisement does not constitute an offer in the states of NY or NJ or any jurisdiction where prior registration or other qualification is required. While we have made every attempt to ensure that the information contained in the advertising materials has been obtained from reliable sources, The Terraces, a Condominium, operating under the name of Group Latitude, LLC, is not responsible for any errors or omissions, or for the results obtained from the use of this information, and without warranty of any kind, express or implied, including, but not limited to warranties of performance, merchantability and fitness for a particular purpose. In no event will The Terraces, a Condominium, operating under the name of Group Latitude, LLC, its related partnerships or corporations, or the partners, agents or employees thereof be liable to you or anyone else for any decision made or action taken in reliance on the information in the advertising materials or for any consequential, special or similar damages, even if advised of the possibility of such damages.

Douglas Elliman

DEVELOPED BY
LATITUDE GROUP

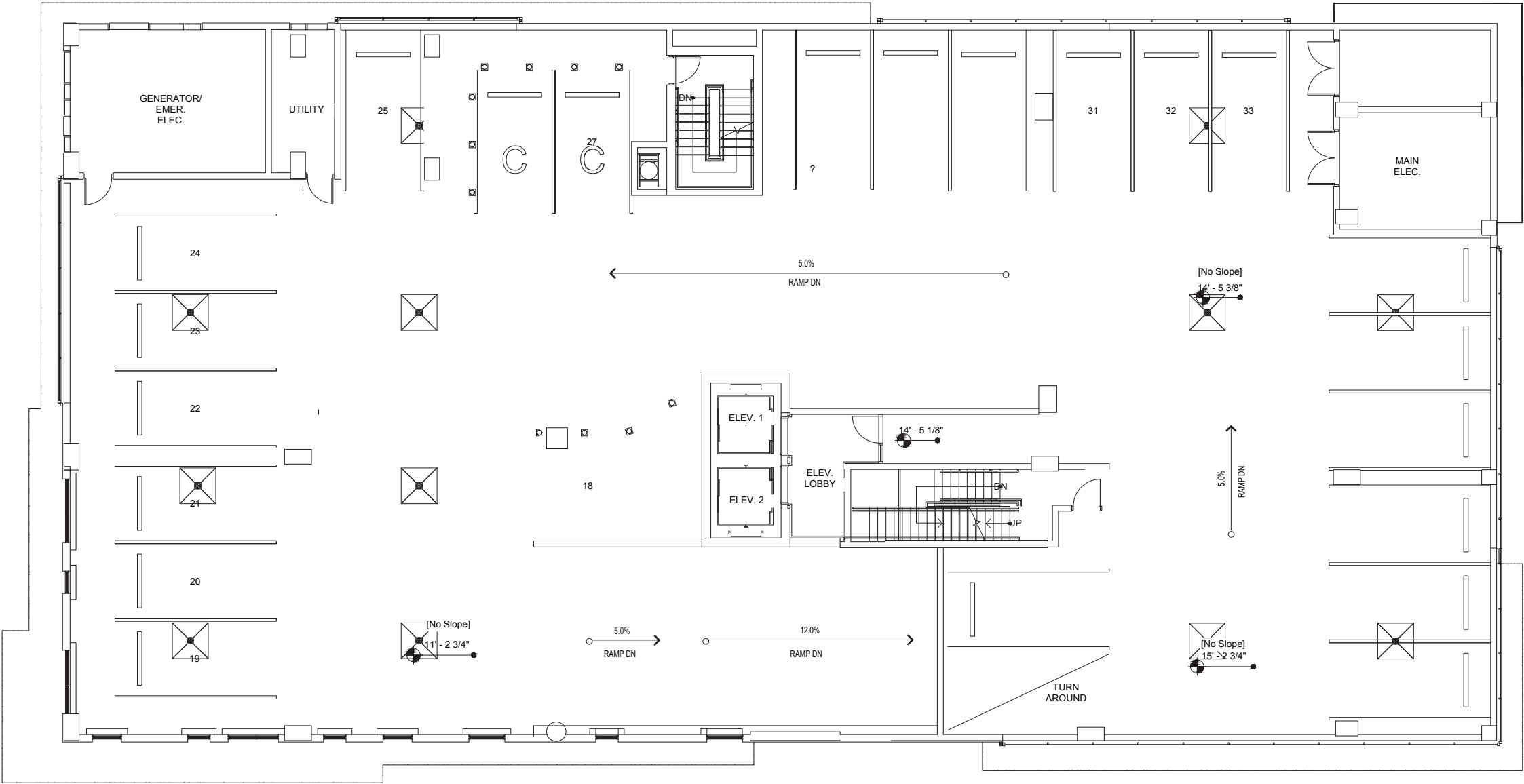


KEY
PLAN

SECOND
FLOOR

AMENITIES

- Two self parking full-size spaces
- Dedicated guest parking



ORTON AVENUE

FORT LAUDERDALE BEACH

the
TERRACES

527 ORTON AVENUE, FORT LAUDERDALE BEACH, FL 33304

954.604.6188

INFO@THETERRACESFTL.COM

THETERRACESFTL.COM

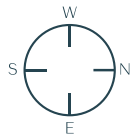


ORAL REPRESENTATIONS CANNOT BE RELIED UPON AS CORRECTLY STATING THE REPRESENTATIONS OF THE DEVELOPER. FOR CORRECT REPRESENTATIONS, REFERENCE SHOULD BE MADE TO THE DOCUMENTS REQUIRED BY SECTION 718.503 FLORIDA STATUTES, TO BE FURNISHED BY THE DEVELOPER TO THE BUYER OR LESSEE. NOT AN OFFER WHERE PROHIBITED BY LAW. PHOTO IS ARTIST'S RENDERING, SUBJECT TO CHANGE.

Douglas Elliman

DEVELOPED BY
LATITUDE GROUP

Plans, features and amenities subject to change without notice. All illustrations and plans are artist's conceptual renderings and are subject to change without notice. This advertisement does not constitute an offer in the states of NY or NJ or any jurisdiction where prior registration or other qualification is required. While we have made every attempt to ensure that the information contained in the advertising materials has been obtained from reliable sources, The Terraces, a Condominium, operating under the name of Group Latitude, LLC, is not responsible for any errors or omissions, or for the results obtained from the use of this information, and without warranty of any kind, express or implied, including, but not limited to warranties of performance, merchantability and fitness for a particular purpose. In no event will The Terraces, a Condominium, operating under the name of Group Latitude, LLC, its related partnerships or corporations, or the partners, agents or employees thereof be liable to you or anyone else for any decision made or action taken in reliance on the information in the advertising materials or for any consequential, special or similar damages, even if advised of the possibility of such damages.

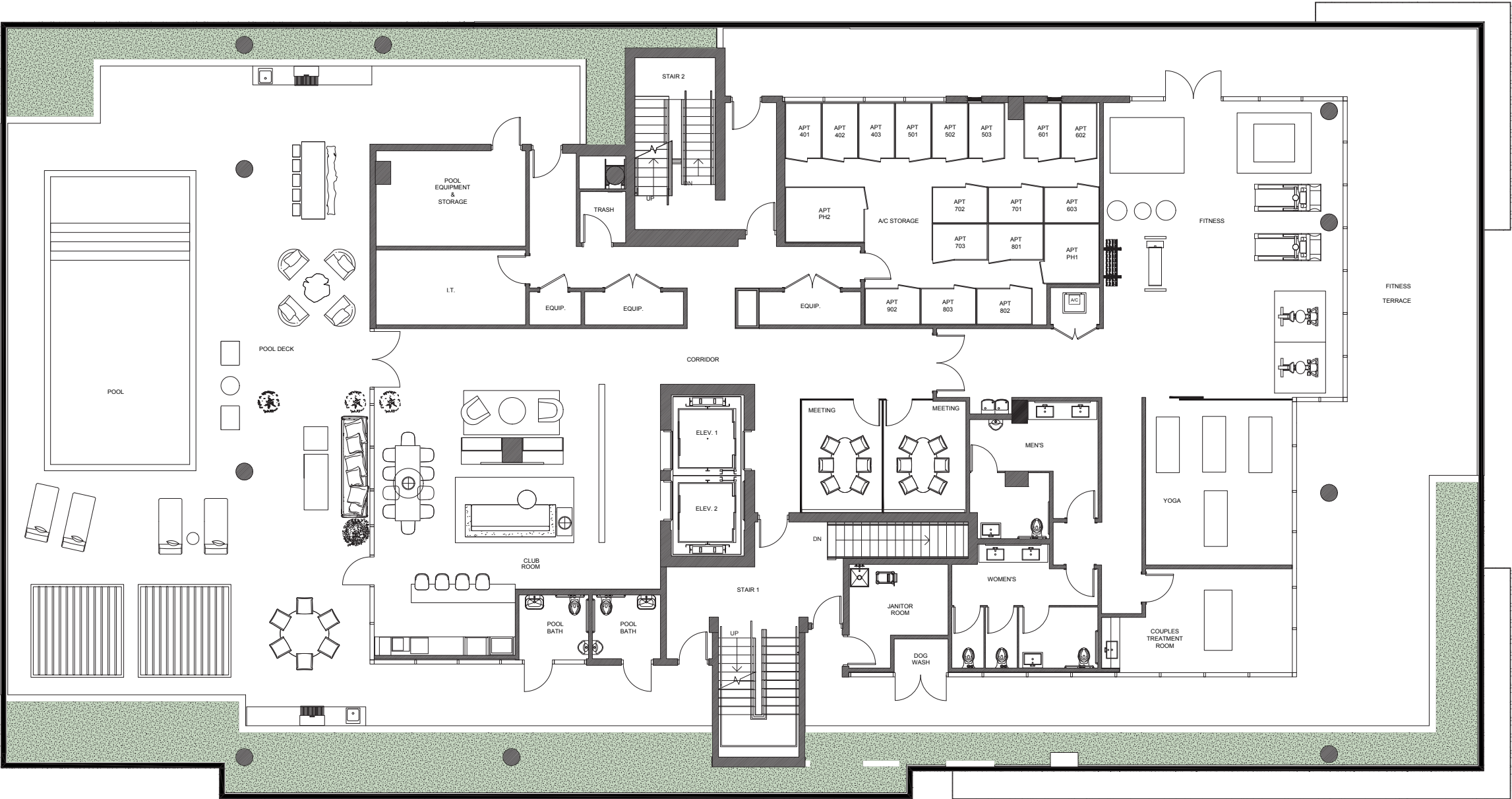


KEY
PLAN

THIRD
FLOOR

AMENITIES

- Relaxation deck with pool and cabanas
- Fully-equipped fitness center with Peloton bikes and treadmills
- Health center for yoga, Pilates and meditation
- Wellness treatment rooms and spa
- Club room with lounge and kitchen
- 2 summer kitchens
- 2 Private office conference rooms
- Pet Spa
- Private air conditioned storage
- WiFi in all common areas



ORTON AVENUE

FORT LAUDERDALE BEACH

the
TERRACES

527 ORTON AVENUE, FORT LAUDERDALE BEACH, FL 33304

954.604.6188

INFO@THETERRACESFTL.COM

THETERRACESFTL.COM

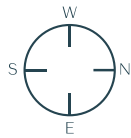


ORAL REPRESENTATIONS CANNOT BE RELIED UPON AS CORRECTLY STATING THE REPRESENTATIONS OF THE DEVELOPER. FOR CORRECT REPRESENTATIONS, REFERENCE SHOULD BE MADE TO THE DOCUMENTS REQUIRED BY SECTION 718.503 FLORIDA STATUTES, TO BE FURNISHED BY THE DEVELOPER TO THE BUYER OR LESSEE. NOT AN OFFER WHERE PROHIBITED BY LAW. PHOTO IS ARTIST'S RENDERING, SUBJECT TO CHANGE.

DouglasElliman

DEVELOPED BY
LATITUDE GROUP

Plans, features and amenities subject to change without notice. All illustrations and plans are artist's conceptual renderings and are subject to change without notice. This advertisement does not constitute an offer in the states of NY or NJ or any jurisdiction where prior registration or other qualification is required. While we have made every attempt to ensure that the information contained in the advertising materials has been obtained from reliable sources, The Terraces, a Condominium, operating under the name of Group Latitude, LLC, is not responsible for any errors or omissions, or for the results obtained from the use of this information. All information in the advertising materials is provided "as is," with no guarantee of completeness, accuracy, timeliness or of the results obtained from the use of this information, and without warranty of any kind, express or implied, including, but not limited to warranties of performance, merchantability and fitness for a particular purpose. In no event will The Terraces, a Condominium, operating under the name of Group Latitude, LLC, its related partnerships or corporations, or the partners, agents or employees thereof be liable to you or anyone else for any decision made or action taken in reliance on the information in the advertising materials or for any consequential, special or similar damages, even if advised of the possibility of such damages.



RESIDENCE A

RESIDENCE B

RESIDENCE C

KEY
PLAN

FOURTH FLOOR



ORTON AVENUE

FORT LAUDERDALE BEACH ↓

The
TERRACES

527 ORTON AVENUE, FORT LAUDERDALE BEACH, FL 33304

954.604.6188

INFO@THETERRACESFTL.COM

THETERRACESFTL.COM

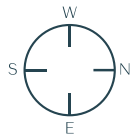


ORAL REPRESENTATIONS CANNOT BE RELIED UPON AS CORRECTLY STATING THE REPRESENTATIONS OF THE DEVELOPER. FOR CORRECT REPRESENTATIONS, REFERENCE SHOULD BE MADE TO THE DOCUMENTS REQUIRED BY SECTION 718.503 FLORIDA STATUTES, TO BE FURNISHED BY THE DEVELOPER TO THE BUYER OR LESSEE. NOT AN OFFER WHERE PROHIBITED BY LAW. PHOTO IS ARTIST'S RENDERING, SUBJECT TO CHANGE.

Douglas Elliman

DEVELOPED BY
LATITUDE GROUP

Plans, features and amenities subject to change without notice. All illustrations and plans are artist's conceptual renderings and are subject to change without notice. This advertisement does not constitute an offer in the states of NY or NJ or any jurisdiction where prior registration or other qualification is required. While we have made every attempt to ensure that the information contained in the advertising materials has been obtained from reliable sources, The Terraces, a Condominium, operating under the name of Group Latitude, LLC, is not responsible for any errors or omissions, or for the results obtained from the use of this information. All information in the advertising materials is provided "as is," with no guarantee of completeness, accuracy, timeliness or of the results obtained from the use of this information, and without warranty of any kind, express or implied, including, but not limited to warranties of performance, merchantability and fitness for a particular purpose. In no event will The Terraces, a Condominium, operating under the name of Group Latitude, LLC, its related partnerships or corporations, or the partners, agents or employees thereof be liable to you or anyone else for any decision made or action taken in reliance on the information in the advertising materials or for any consequential, special or similar damages, even if advised of the possibility of such damages.



RESIDENCE A

RESIDENCE B

RESIDENCE C

KEY
PLAN

FIFTH
FLOOR



ORTON AVENUE

FORT LAUDERDALE BEACH

The
TERRACES

527 ORTON AVENUE, FORT LAUDERDALE BEACH, FL 33304

954.604.6188

INFO@THETERRACESFTL.COM

THETERRACESFTL.COM

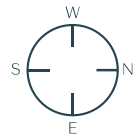


ORAL REPRESENTATIONS CANNOT BE RELIED UPON AS CORRECTLY STATING THE REPRESENTATIONS OF THE DEVELOPER. FOR CORRECT REPRESENTATIONS, REFERENCE SHOULD BE MADE TO THE DOCUMENTS REQUIRED BY SECTION 718.503 FLORIDA STATUTES, TO BE FURNISHED BY THE DEVELOPER TO THE BUYER OR LESSEE. NOT AN OFFER WHERE PROHIBITED BY LAW. PHOTO IS ARTIST'S RENDERING, SUBJECT TO CHANGE.

Douglas Elliman

DEVELOPED BY
LATITUDE GROUP

Plans, features and amenities subject to change without notice. All illustrations and plans are artist's conceptual renderings and are subject to change without notice. This advertisement does not constitute an offer in the states of NY or NJ or any jurisdiction where prior registration or other qualification is required. While we have made every attempt to ensure that the information contained in the advertising materials has been obtained from reliable sources, The Terraces, a Condominium, operating under the name of Group Latitude, LLC, is not responsible for any errors or omissions, or for the results obtained from the use of this information. All information in the advertising materials is provided "as is", with no guarantee of completeness, accuracy, timeliness or of the results obtained from the use of this information, and without warranty of any kind, express or implied, including, but not limited to warranties of performance, merchantability and fitness for a particular purpose. In no event will The Terraces, a Condominium, operating under the name of Group Latitude, LLC, its related partnerships or corporations, or the partners, agents or employees thereof be liable to you or anyone else for any decision made or action taken in reliance on the information in the advertising materials or for any consequential, special or similar damages, even if advised of the possibility of such damages.



RESIDENCE A

RESIDENCE B

RESIDENCE C

KEY
PLAN

SIXTH FLOOR



ORTON AVENUE

FORT LAUDERDALE BEACH ↓

The
TERRACES

527 ORTON AVENUE, FORT LAUDERDALE BEACH, FL 33304

954.604.6188

INFO@THETERRACESFTL.COM

THETERRACESFTL.COM

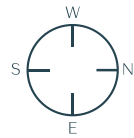


ORAL REPRESENTATIONS CANNOT BE RELIED UPON AS CORRECTLY STATING THE REPRESENTATIONS OF THE DEVELOPER. FOR CORRECT REPRESENTATIONS, REFERENCE SHOULD BE MADE TO THE DOCUMENTS REQUIRED BY SECTION 718.503 FLORIDA STATUTES, TO BE FURNISHED BY THE DEVELOPER TO THE BUYER OR LESSEE. NOT AN OFFER WHERE PROHIBITED BY LAW. PHOTO IS ARTIST'S RENDERING, SUBJECT TO CHANGE.

Douglas Elliman

DEVELOPED BY
LATITUDE GROUP

Plans, features and amenities subject to change without notice. All illustrations and plans are artist's conceptual renderings and are subject to change without notice. This advertisement does not constitute an offer in the states of NY or NJ or any jurisdiction where prior registration or other qualification is required. While we have made every attempt to ensure that the information contained in the advertising materials has been obtained from reliable sources, The Terraces, a Condominium, operating under the name of Group Latitude, LLC, is not responsible for any errors or omissions, or for the results obtained from the use of this information, and without warranty of any kind, express or implied, including, but not limited to warranties of performance, merchantability and fitness for a particular purpose. In no event will The Terraces, a Condominium, operating under the name of Group Latitude, LLC, its related partnerships or corporations, or the partners, agents or employees thereof be liable to you or anyone else for any decision made or action taken in reliance on the information in the advertising materials or for any consequential, special or similar damages, even if advised of the possibility of such damages.



RESIDENCE A

RESIDENCE B

KEY
PLAN

SEVENTH FLOOR



ORTON AVENUE

FORT LAUDERDALE BEACH

The
TERRACES

527 ORTON AVENUE, FORT LAUDERDALE BEACH, FL 33304

954.604.6188

INFO@THETERRACESFTL.COM

THETERRACESFTL.COM

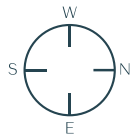


ORAL REPRESENTATIONS CANNOT BE RELIED UPON AS CORRECTLY STATING THE REPRESENTATIONS OF THE DEVELOPER. FOR CORRECT REPRESENTATIONS, REFERENCE SHOULD BE MADE TO THE DOCUMENTS REQUIRED BY SECTION 718.503 FLORIDA STATUTES, TO BE FURNISHED BY THE DEVELOPER TO THE BUYER OR LESSEE. NOT AN OFFER WHERE PROHIBITED BY LAW. PHOTO IS ARTIST'S RENDERING, SUBJECT TO CHANGE.

Douglas Elliman

DEVELOPED BY
LATITUDE GROUP

Plans, features and amenities subject to change without notice. All illustrations and plans are artist's conceptual renderings and are subject to change without notice. This advertisement does not constitute an offer in the states of NY or NJ or any jurisdiction where prior registration or other qualification is required. While we have made every attempt to ensure that the information contained in the advertising materials has been obtained from reliable sources, The Terraces, a Condominium, operating under the name of Group Latitude, LLC, is not responsible for any errors or omissions, or for the results obtained from the use of this information. All information in the advertising materials is provided "as is," with no guarantee of completeness, accuracy, timeliness or of the results obtained from the use of this information, and without warranty of any kind, express or implied, including, but not limited to warranties of performance, merchantability and fitness for a particular purpose. In no event will The Terraces, a Condominium, operating under the name of Group Latitude, LLC, its related partnerships or corporations, or the partners, agents or employees thereof be liable to you or anyone else for any decision made or action taken in reliance on the information in the advertising materials or for any consequential, special or similar damages, even if advised of the possibility of such damages.



RESIDENCE A

RESIDENCE B

KEY
PLAN

EIGHTH FLOOR



ORTON AVENUE

FORT LAUDERDALE BEACH ↓

The
TERRACES

527 ORTON AVENUE, FORT LAUDERDALE BEACH, FL 33304

954.604.6188

INFO@THETERRACESFTL.COM

THETERRACESFTL.COM

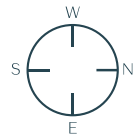


ORAL REPRESENTATIONS CANNOT BE RELIED UPON AS CORRECTLY STATING THE REPRESENTATIONS OF THE DEVELOPER. FOR CORRECT REPRESENTATIONS, REFERENCE SHOULD BE MADE TO THE DOCUMENTS REQUIRED BY SECTION 718.503 FLORIDA STATUTES, TO BE FURNISHED BY THE DEVELOPER TO THE BUYER OR LESSEE. NOT AN OFFER WHERE PROHIBITED BY LAW. PHOTO IS ARTIST'S RENDERING, SUBJECT TO CHANGE.

Douglas Elliman

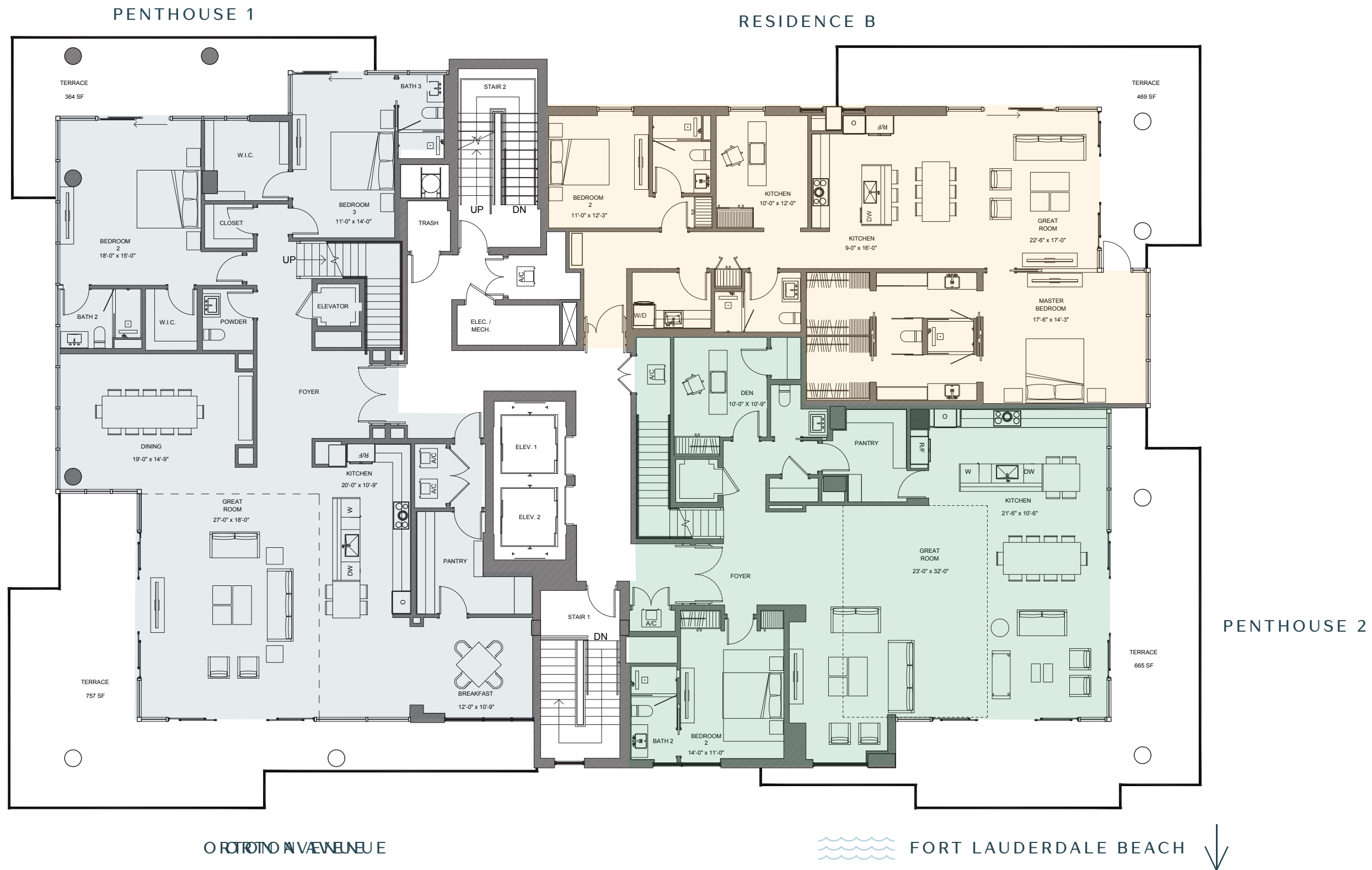
DEVELOPED BY
LATITUDE GROUP

Plans, features and amenities subject to change without notice. All illustrations and plans are artist's conceptual renderings and are subject to change without notice. This advertisement does not constitute an offer in the states of NY or NJ or any jurisdiction where prior registration or other qualification is required. While we have made every attempt to ensure that the information contained in the advertising materials has been obtained from reliable sources, The Terraces, a Condominium, operating under the name of Group Latitude, LLC, is not responsible for any errors or omissions, or for the results obtained from the use of this information, and without warranty of any kind, express or implied, including, but not limited to warranties of performance, merchantability and fitness for a particular purpose. In no event will The Terraces, a Condominium, operating under the name of Group Latitude, LLC, its related partnerships or corporations, or the partners, agents or employees thereof be liable to you or anyone else for any decision made or action taken in reliance on the information in the advertising materials or for any consequential, special or similar damages, even if advised of the possibility of such damages.



KEY
PLAN

NINTH FLOOR



The
TERRACES

527 ORTON AVENUE, FORT LAUDERDALE BEACH, FL 33304

954.604.6188

INFO@THETERRACESFTL.COM

THETERRACESFTL.COM



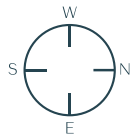
ORAL REPRESENTATIONS CANNOT BE RELIED UPON AS CORRECTLY STATING THE REPRESENTATIONS OF THE DEVELOPER. FOR CORRECT REPRESENTATIONS, REFERENCE SHOULD BE MADE TO THE DOCUMENTS REQUIRED BY SECTION 718.503 FLORIDA STATUTES, TO BE FURNISHED BY THE DEVELOPER TO THE BUYER OR LESSEE. NOT AN OFFER WHERE PROHIBITED BY LAW. PHOTO IS ARTIST'S RENDERING, SUBJECT TO CHANGE.



Douglas Elliman

DEVELOPED BY
LATITUDE GROUP

Plans, features and amenities subject to change without notice. All illustrations and plans are artist's conceptual renderings and are subject to change without notice. This advertisement does not constitute an offer in the states of NY or NJ or any jurisdiction where prior registration or other qualification is required. While we have made every attempt to ensure that the information contained in the advertising materials has been obtained from reliable sources, The Terraces, a Condominium, operating under the name of Group Latitude, LLC, is not responsible for any errors or omissions, or for the results obtained from the use of this information. All information in the advertising materials is provided "as is," with no guarantee of completeness, accuracy, timeliness or of the results obtained from the use of this information, and without warranty of any kind, express or implied, including, but not limited to warranties of performance, merchantability and fitness for a particular purpose. In no event will The Terraces, a Condominium, operating under the name of Group Latitude, LLC, its related partnerships or corporations, or the partners, agents or employees thereof be liable to you or anyone else for any decision made or action taken in reliance on the information in the advertising materials or for any consequential, special or similar damages, even if advised of the possibility of such damages.

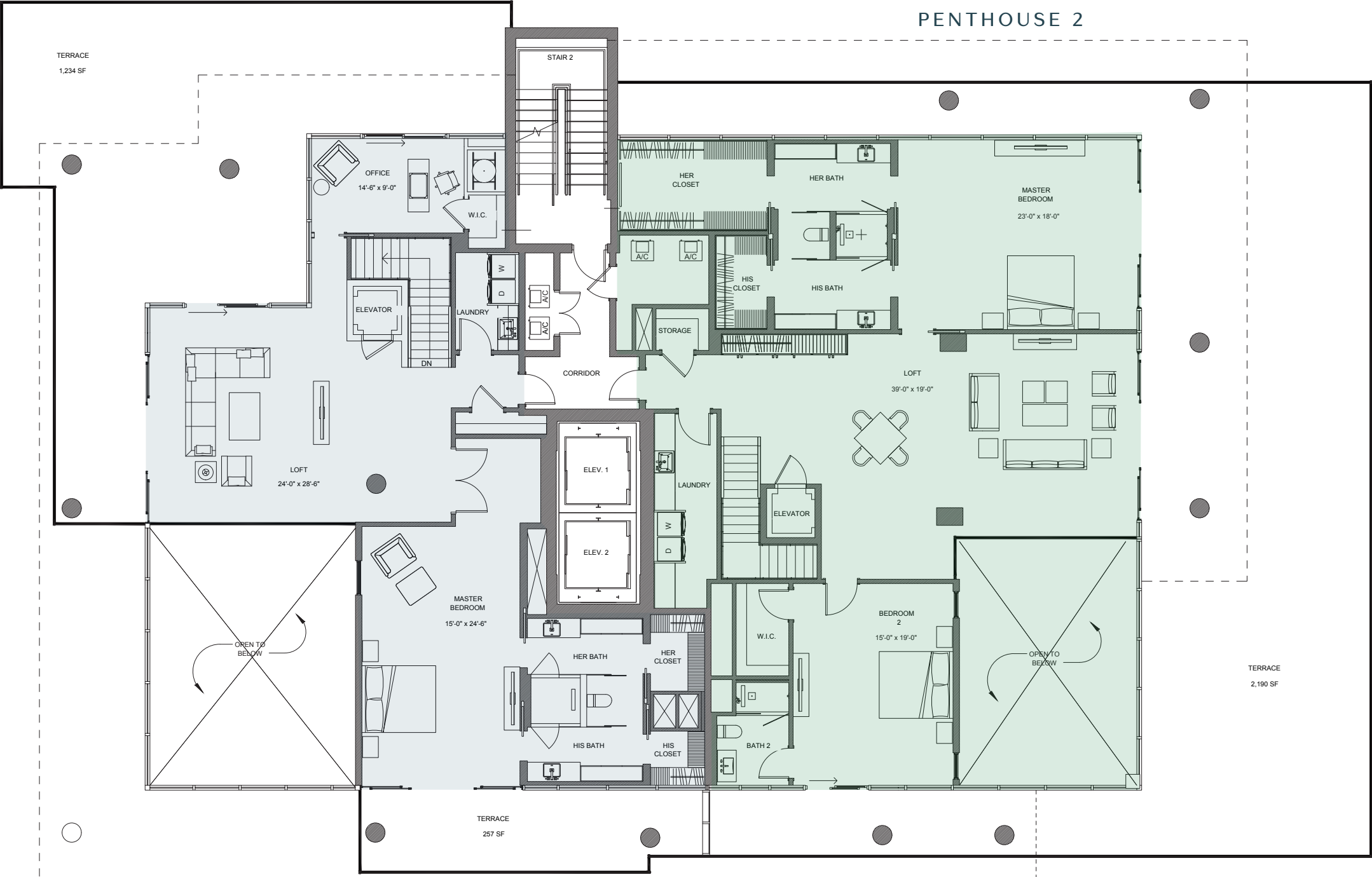


PENTHOUSE 1

PENTHOUSE 2

KEY
PLAN

TENTH
FLOOR



ORTON AVENUE

FORT LAUDERDALE BEACH

The
TERRACES

527 ORTON AVENUE, FORT LAUDERDALE BEACH, FL 33304

954.604.6188

INFO@THETERRACESFTL.COM

THETERRACESFTL.COM



ORAL REPRESENTATIONS CANNOT BE RELIED UPON AS CORRECTLY STATING THE REPRESENTATIONS OF THE DEVELOPER. FOR CORRECT REPRESENTATIONS, REFERENCE SHOULD BE MADE TO THE DOCUMENTS REQUIRED BY SECTION 718.503 FLORIDA STATUTES, TO BE FURNISHED BY THE DEVELOPER TO THE BUYER OR LESSEE. NOT AN OFFER WHERE PROHIBITED BY LAW. PHOTO IS ARTIST'S RENDERING, SUBJECT TO CHANGE.

Douglas Elliman

DEVELOPED BY
LATITUDE GROUP

Plans, features and amenities subject to change without notice. All illustrations and plans are artist's conceptual renderings and are subject to change without notice. This advertisement does not constitute an offer in the states of NY or NJ or any jurisdiction where prior registration or other qualification is required. While we have made every attempt to ensure that the information contained in the advertising materials has been obtained from reliable sources, The Terraces, a Condominium, operating under the name of Group Latitude, LLC, is not responsible for any errors or omissions, or for the results obtained from the use of this information. All information in the advertising materials is provided "as is," with no guarantee of completeness, accuracy, timeliness or of the results obtained from the use of this information, and without warranty of any kind, express or implied, including, but not limited to warranties of performance, merchantability and fitness for a particular purpose. In no event will The Terraces, a Condominium, operating under the name of Group Latitude, LLC, its related partnerships or corporations, or the partners, agents or employees thereof be liable to you or anyone else for any decision made or action taken in reliance on the information in the advertising materials or for any consequential, special or similar damages, even if advised of the possibility of such damages.